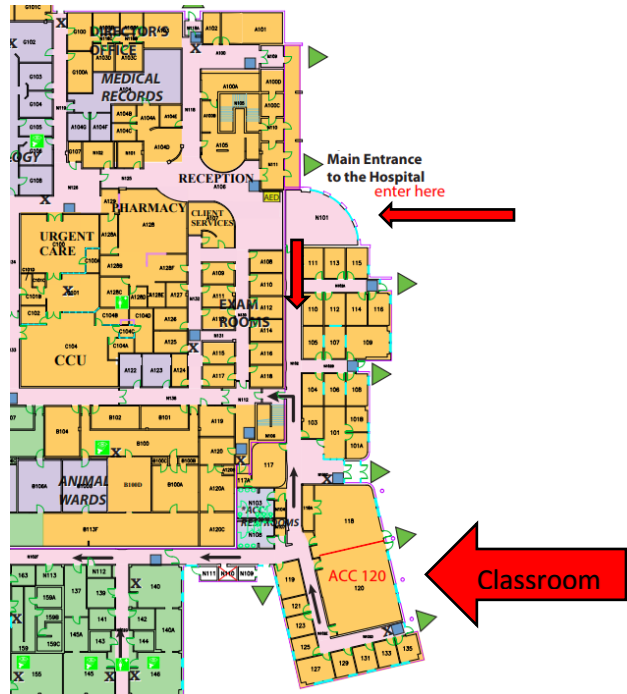


# MAP

Training and Organizational Development  
South Campus – Veterinary Teaching Hospital ACC 120  
Phone: (970) 491-1376



## ***Location:***

Classes will be held in room ACC 120 in the Veterinary Teaching Hospital on the South Campus.

## ***Parking Information:***

Recommended parking for A Permit holders is in lot 725 on the west side of VTH. Metered visitor parking is available on the north side of Lot 725. Lots 715 and 716 are for VTH client parking only.

Visit the Parking and Transportation Services website ([www.pts.colostate.edu](http://www.pts.colostate.edu)), or call (970) 491-7041 for the most current road closure and parking information. To view a larger map choose the “Parking Services” tab, then “Campus Map.”

## ***Directions to Classroom:***

Enter VTH main entrance. Off the main lobby go down the Shipley Comparative Medicine Hallway to the classroom on the left at the end of the hall. The room numbers are hanging from the ceiling to direct you.