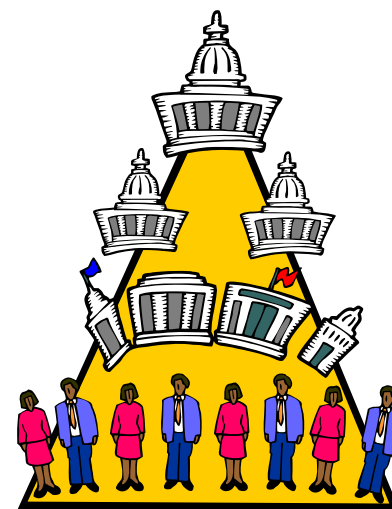


Incident Command  
for  
CSU Departments and Units

March 2007

# What it Is

- Incident Command is the process used to control response to emergencies in the field
- It is flexible and can go from one person handling a small situation, to a large, multi-agency response



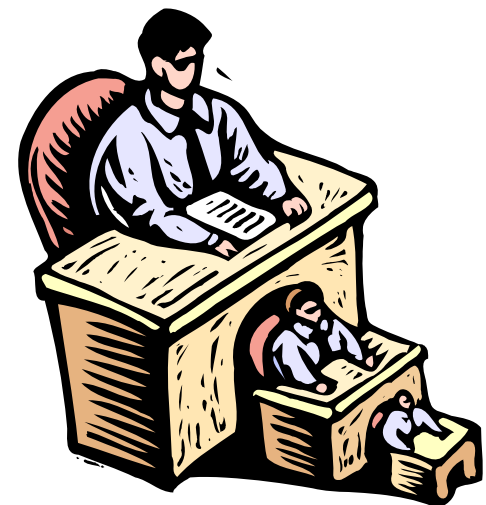
# Structure

- The Incident Commander handles overall scene response and is supported by:
  - Safety Officer
  - Public Information Officer
  - Planning Officer
  - Liaison Officer (to coordinate with other command posts)



# Incident Management in Your Department

- Your Director or Department Head will probably be 'in charge, with:
  - Liaison to the Emergency IC
  - Liaison to the CSU Emergency Mgt. Team
  - Staff/Student Accountability Coordinator
  - Follow Up Planning Coordinator
  - Documentation Coordinator
  - Others as indicated



# How to “ID” the “IC”

- The Incident Commander can be pointed out to you by any emergency responder at the scene
- The Command Post vehicle normally has a green light, as well as the emergency lights of all police and fire vehicles





# Review

- As with all elements of your emergency plan, do you have a protocol for holding a ‘face-to-face’ or telephone debriefing of the situation to share information and improve your plan and call trees for next time?

*Training & Organizational  
Development*